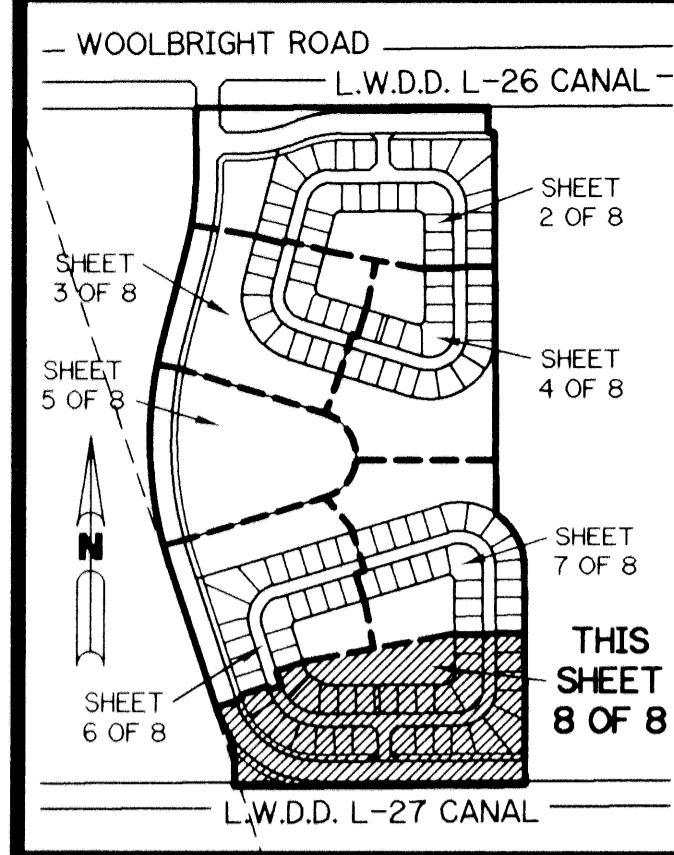


VALENCIA ISLES - PLAT TWO

BEING A REPLAT OF A PORTION OF TRACT "Q" ACCORDING TO THE PLAT OF VALENCIA ISLES - PLAT ONE, AS RECORDED IN PLAT BOOK 84, PAGES 3 THROUGH 17, INCLUSIVE, OF THE PUBLIC RECORDS OF PALM BEACH COUNTY, FLORIDA. LYING IN SECTIONS 33 AND 34, TOWNSHIP 45 SOUTH, RANGE 42 EAST.

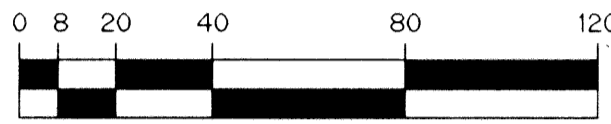
SHEET 8 OF 8 JANUARY, 1999



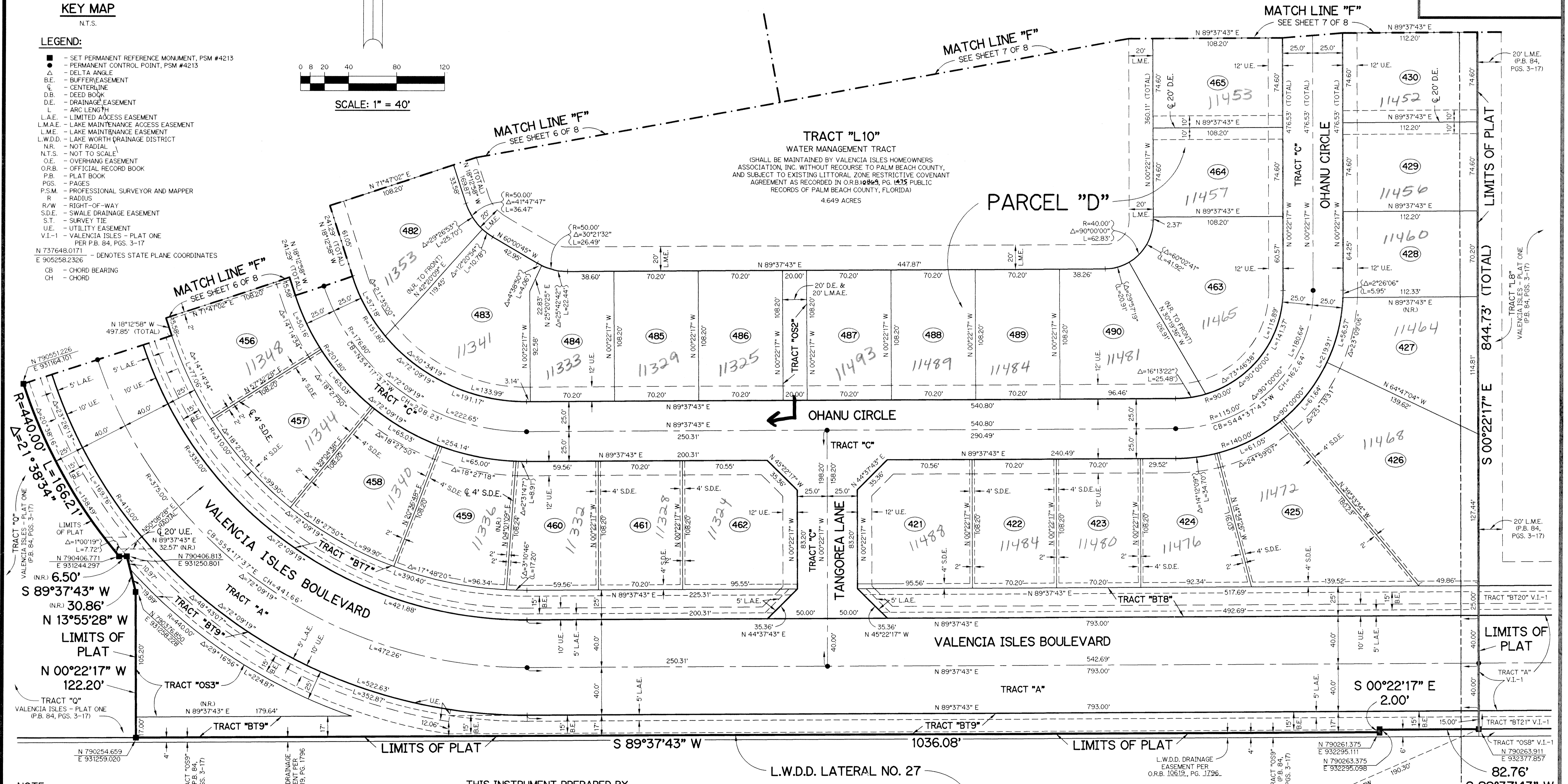
KEY MAP
N.T.S.

LEGEND:

- - SET PERMANENT REFERENCE MONUMENT, PSM #4213
- - PERMANENT CONTROL POINT, PSM #4213
- Δ - DELTA ANGLE
- B.E. - BUFFER/EASEMENT
- Q - CENTERLINE
- D.B. - DEED BOOK
- D.E. - DRAINAGE EASEMENT
- L - ARC LENGTH
- L.A.E. - LIMITED ACCESS EASEMENT
- L.M.A.E. - LAKE MAINTENANCE ACCESS EASEMENT
- L.M.E. - LAKE MAINTENANCE EASEMENT
- L.W.D.D. - LAKE WORTH DRAINAGE DISTRICT
- N.R. - NOT RADIAL
- N.T.S. - NOT TO SCALE
- O.E. - OVERHANG EASEMENT
- O.F.B. - OFFICIAL RECORD BOOK
- P.B. - PLAT BOOK
- PGS. - PAGES
- P.S.M. - PROFESSIONAL SURVEYOR AND MAPPER
- R - RADIUS
- R/W - RIGHT-OF-WAY
- S.D.E. - SWALE DRAINAGE EASEMENT
- S.T. - SURVEY TIE
- U.E. - UTILITY EASEMENT
- V.I.-1 - VALENCIA ISLES - PLAT ONE PER P.B. 84, PGS. 3-17
- N 737648.0171 E 905258.2326 - DENOTES STATE PLANE COORDINATES
- CB - CHORD BEARING
- CH - CHORD



SCALE: 1" = 40'



NOTE:
COORDINATES SHOWN ARE GRID COORDINATES
DATUM = NAD 83 (1990 ADJUSTMENT)
ZONE = FLORIDA EAST ZONE
LINEAR UNIT = U.S. SURVEY FEET
COORDINATE SYSTEM = 1983 STATE PLANE TRANSVERSE MERCATOR PROJECTION
ALL DISTANCES ARE GROUND
SCALE FACTOR = 1.0000285
N 89°37'43" E (PLAT BEARING)
N 89°37'43" E (GRID BEARING) (PLAT = GRID)

THIS INSTRUMENT PREPARED BY
PERRY C. WHITE, P.S.M. 4213, STATE OF FLORIDA
LAWSON, NOBLE AND WEBB, INC.
ENGINEERS PLANNERS SURVEYORS
420 COLUMBIA DRIVE
WEST PALM BEACH, FLORIDA
LB-6674

N 790181.2250 E 929572.4130
FOUND PALM BEACH COUNTY CONCRETE MONUMENT WITH DISK. "PBF 63"

N 790186.9310 E 932203.8180
FOUND PALM BEACH COUNTY CONCRETE MONUMENT WITH DISK. "MOTOR"

N 790261.375 E 932295.111
N 790263.375 E 932295.098

N 790263.911 E 932377.857

WEST LINE OF SECTION 34, TOWNSHIP 45 SOUTH, RANGE 42 EAST